

EDI Integration with eBiss

**for multinational and
multibrand organizations
with centralized IT**

Organizational model

brands countries	I	II	III	IV
A	A I	A II	A III	A IV
B	B I	B II	B III	B IV
C	C I	C II	C III	C IV
D	D I	D II	D III	D IV

every atomic unit should have a GLN as unique identification

Atomic units : supplier or not

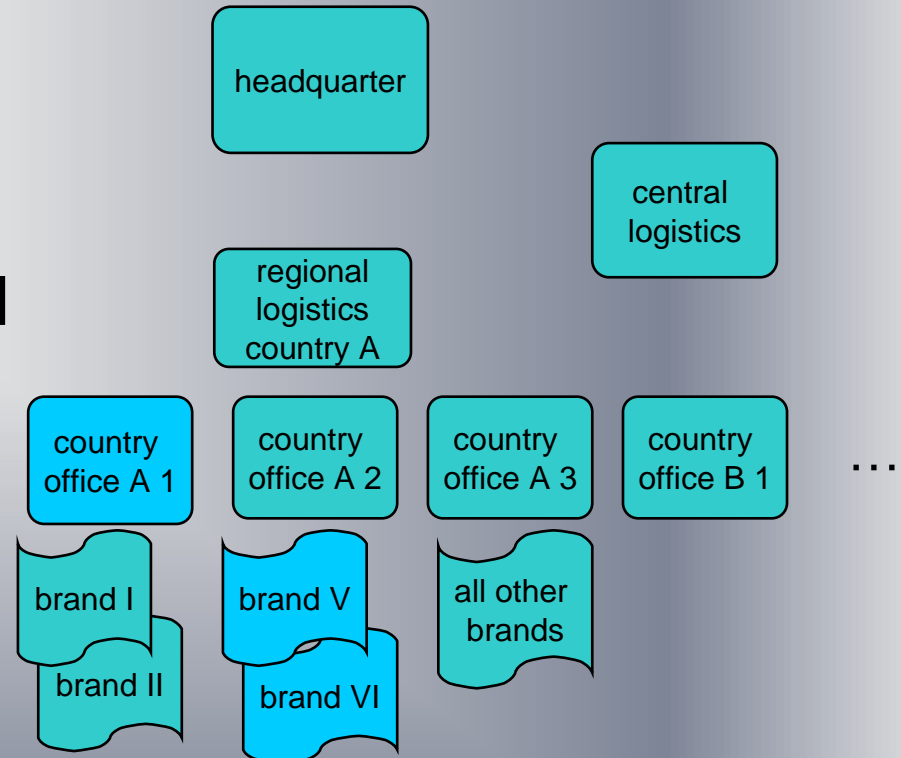
- **under which conditions the retailer regards these units as different suppliers ?**
 - **separate orders**
 - **separate independent logistics**
- **...**

The actual organization



GLN assignment

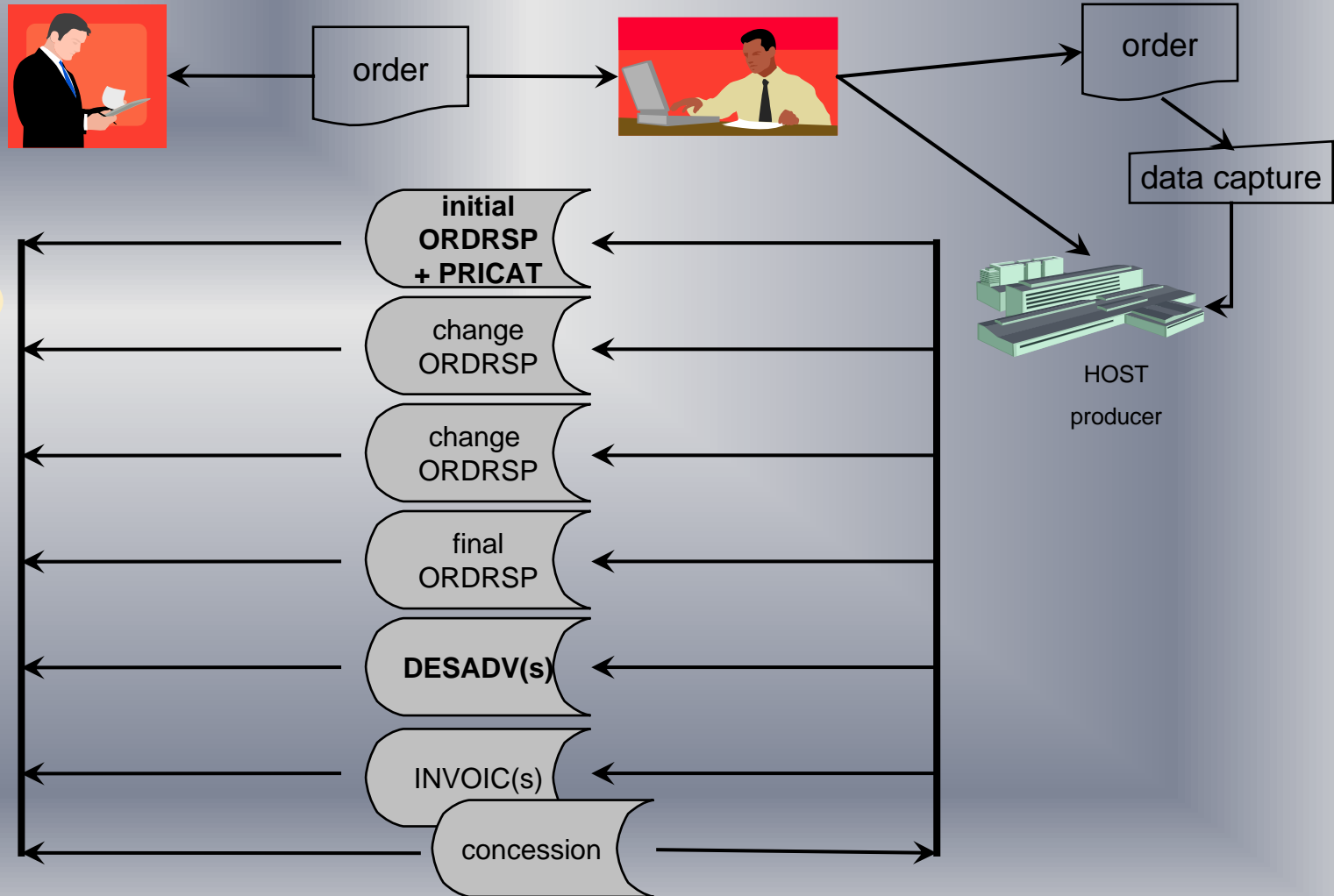
- GLN 1 - headquarter
- GLN 2 – central logistics
- GLN 3 – RL country A
- ...
- [GLN 11 – country office A 1]
- GLN 12 – brand I in A 1
- GLN 13 – brand II in A 1
- GLN 14 – country office A 2
- [GLN 15 – brand V in A 2]
- [GLN 16 – brand VI in A 2]



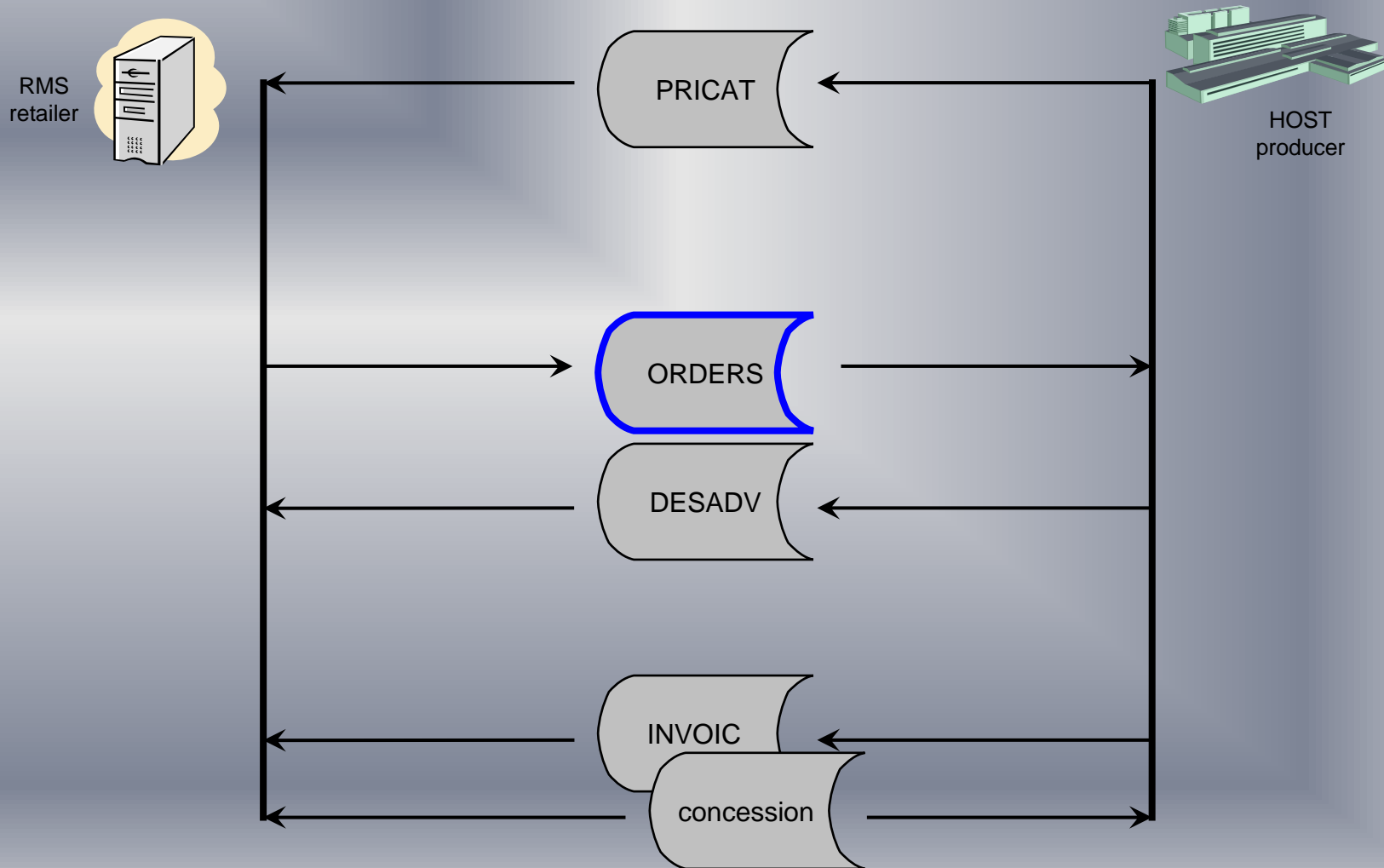
Scenarios : Overview

- **Classical preorder**
- **reorder and out-of-stock order**
- **VMI – vendor managed inventory**
- **CRP – cyclic replenishment program**
- **Concession**

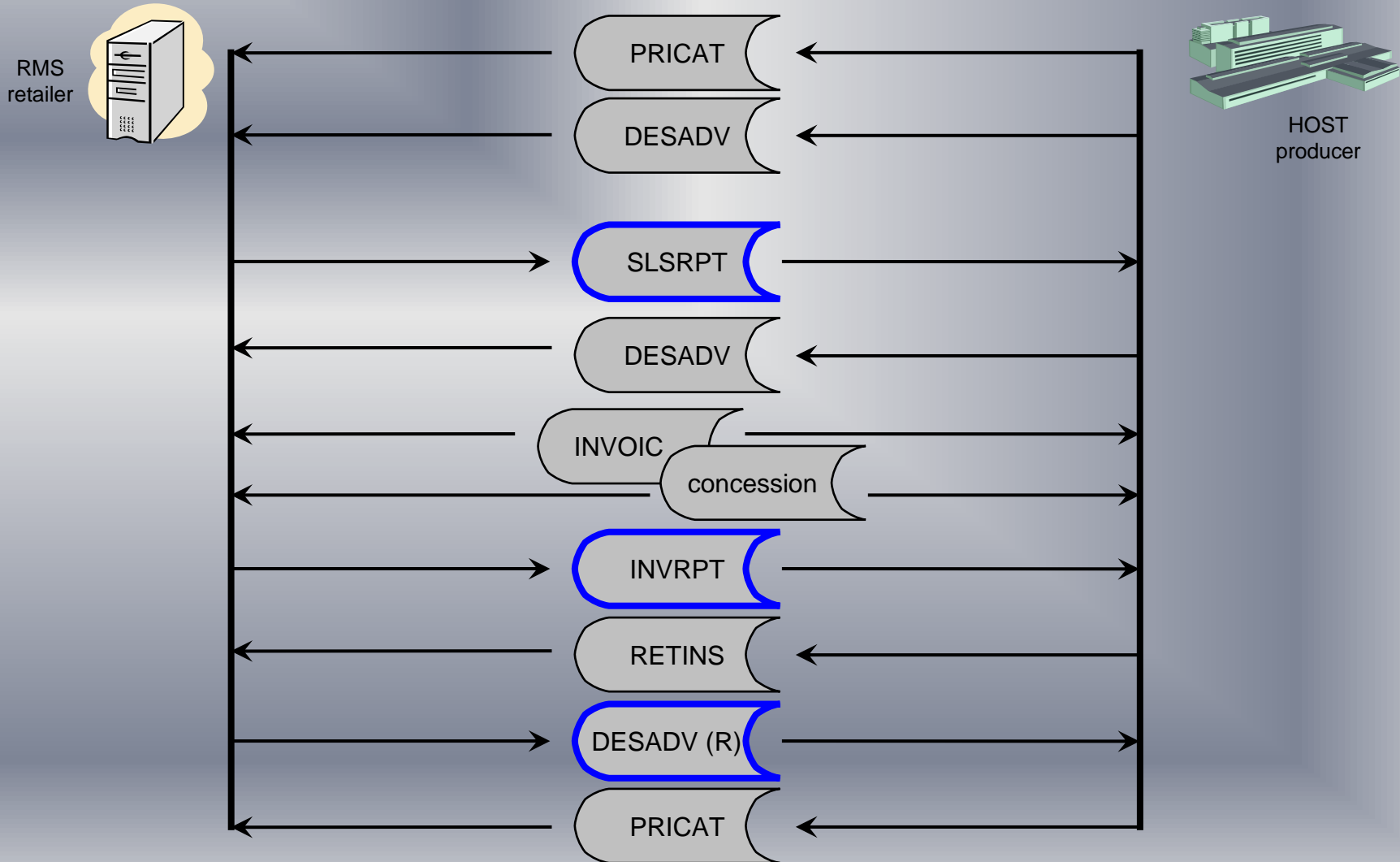
Classical preorder



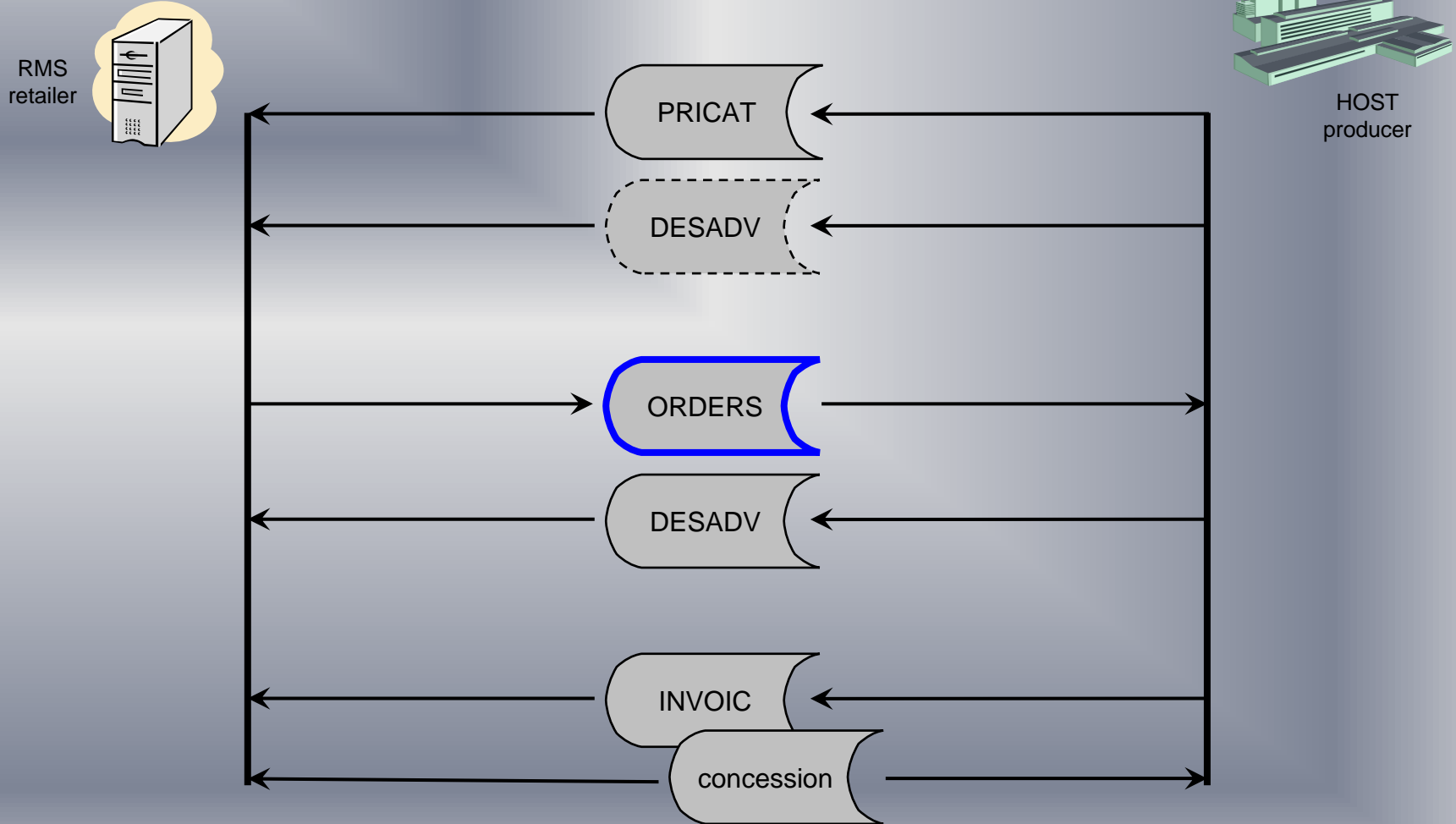
reorder and out-of-stock order



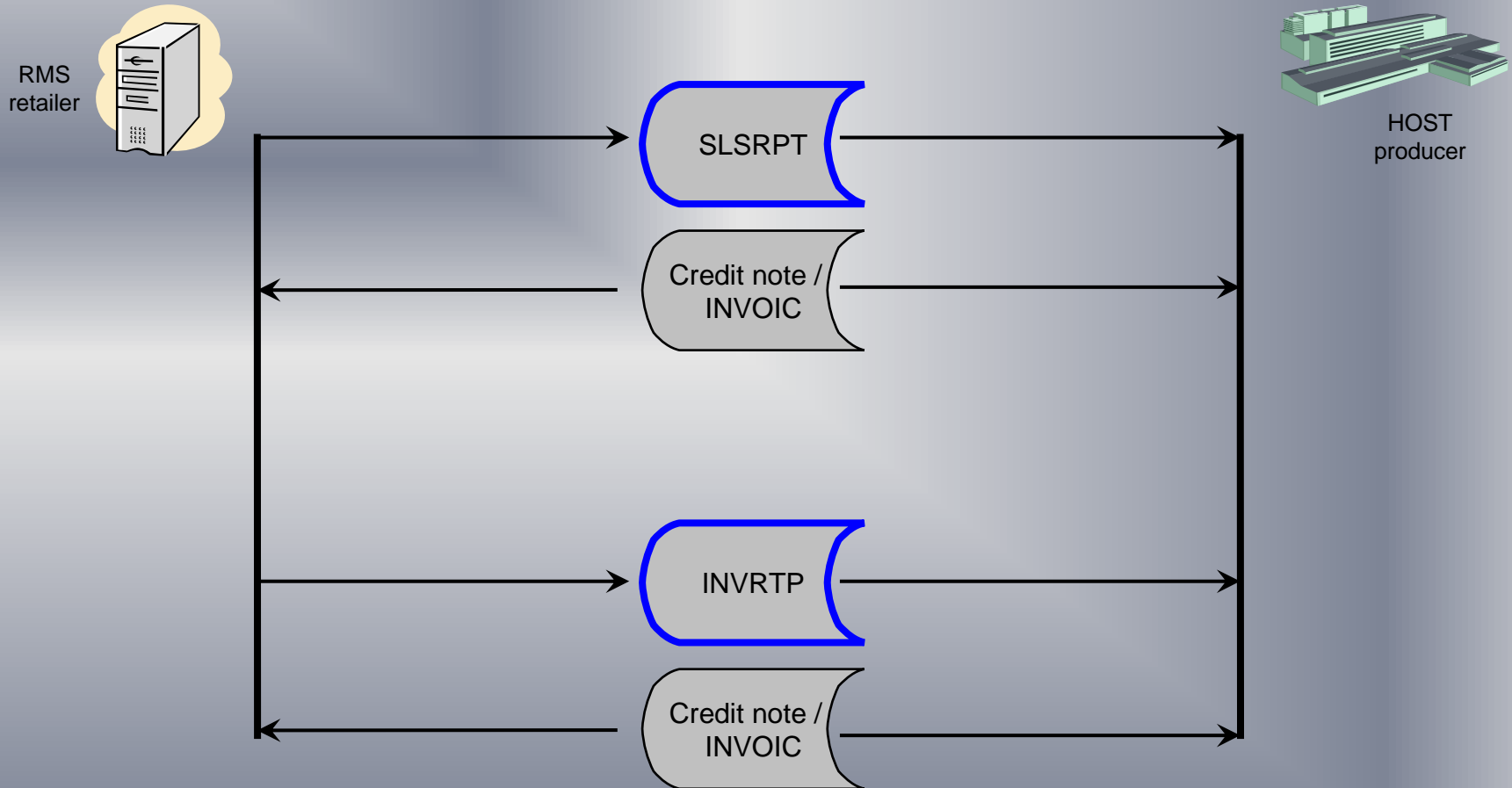
VMI – vendor managed inventory



CRP – cyclic replenishment program



Concession



Article master data

- **identification**
 - EAN
 - Suppliers article number
 - Suppliers color code
 - Suppliers size
- **classification**
 - Standard product group
 - Standard color code
 - Standard size
 - Article class
 - Brand name
 - Sub brand name
 - Article name
 - Supplier product group
 - Customs tariff number
- **content**
 - Effective purchase price
 - (List purchase price)
 - Suggested retail price
 - Currency SRP
 - Country of origin
 - Material code (ISO)
 - Material in %
 - Receipt text
 - Picture file ...

Article master data

- **Minimum quantity**
- **Quantity per packing**
- **Suppliers fabric code**
- **Suppliers style code**
- **Suppliers variant code**
- **Suppliers season**
- **Weight**
- **Packing measurements**
- **Fabric name**
- **Style name**
- **Quality**
- **Fashion theme**

Specific article master data

- **Kaufhof**
 - Available from
 - Available to
- **Breuninger**
 - Lagernummer
 - Produktgruppe
- **Intersport**
 - Size FEDAS
 - Sizegrid FEDAS
 - Product group FEDAS
 - Color code FEDAS
 - Order date from
 - Order date to

Customer master data

- **identification**
 - GLN buyer
 - GLN delivery party
 - GLN ultimate consignee
 - GLN ultimate invoicee
 - **GLN supplier**

 - **GLN customer**
- **Kaufhof**
 - **Purchase department**
 - K2 Kaufhof
 - Supplier number (MGE-No.)
- **content**
 - VAT ID

Customer master data

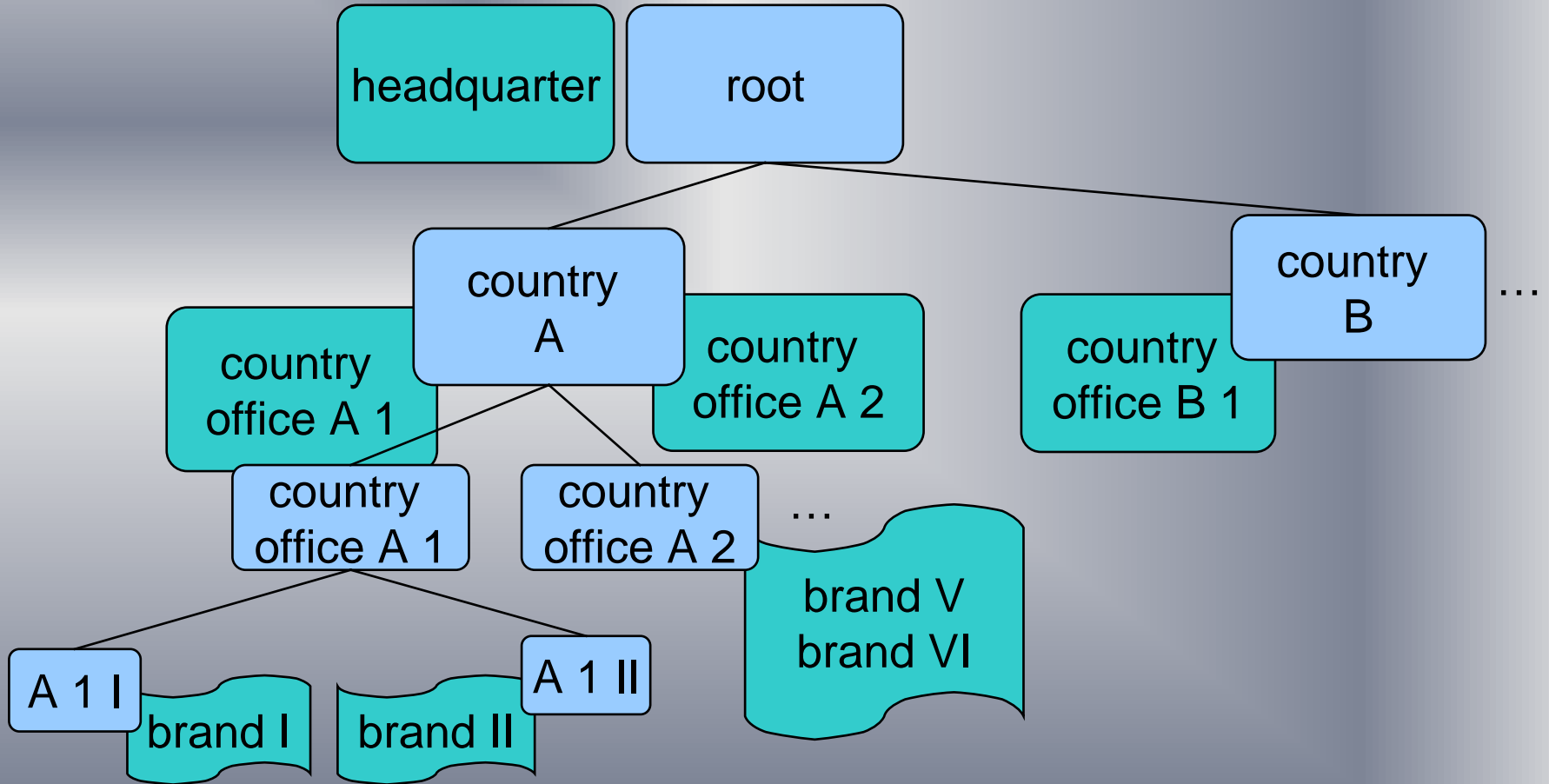
- **parameters**

- ...

- **expectations**

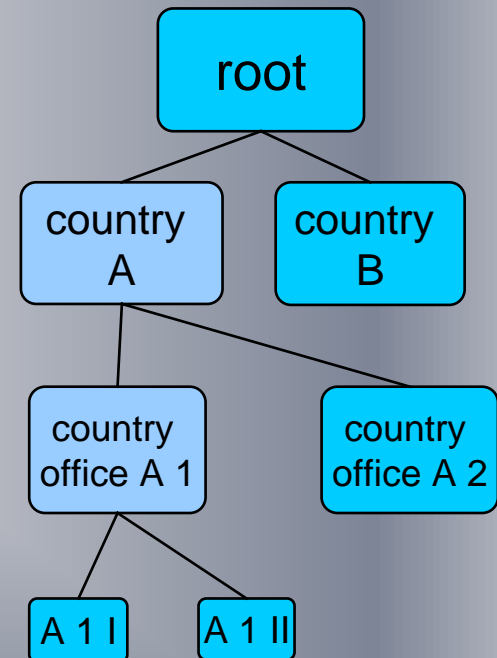
- ...

Organization of Nodes



Subnodes

- **rules for atomic subnodes:**
 - different information in certain parts of the partner file
 - users need access to this part and are restricted to this part only
 - atomic subnode needs unique GLN for external identification
- **rules for intermediate subnodes:**
 - common information for the dependent subnodes in certain parts of the partner template different from a root template
 - users need access to all atomic subnodes belonging to this intermediate node
 - common jobs for the dependent subnodes



Integration levels

- **using live objects**
 - Web services
 - .NET APIs

- **using direct database access**
 - direct database access module

- **using intermediary files**
 - XML files
 - CSV files